

## 服務地點

### SERVICE LOCATION

總部：西九龍海庭道19號  
香港紅十字會總部

電話：2610 0515 / 2802 0021

傳真：3103 4010

電郵：mel@redcross.org.hk

Hong Kong Red Cross Headquarters  
19 Hoi Ting Road, West Kowloon  
Tel. no : 2610 0515 / 2802 0021  
Fax no : 3103 4010  
Email : mel@redcross.org.hk

## 服務時間

### SERVICE HOURS

星期一至五 上午9時至下午5時  
(下午1時至2時午飯時間暫停服務)

星期六 上午9時至中午12時  
(星期日及公眾假期休息)

Monday - Friday 9:00am - 5:00pm  
(Lunch time : 1:00pm - 2:00pm)

Saturday 9:00am - 12:00pm  
(Sunday and public holidays closed)

## 其他交收中心地點及電話

### Other service depots

交收中心 Depot	電話 Tel
大窩口 Tai Wo Hau	5443 8633
觀塘 Kwun Tong	5491 9453
沙田 Shatin	6671 2609
灣仔 Wan Chai	5617 4054
屯門 (臨時) Tuen Mun (Temporary)	5426 4554

註：各交收中心之服務時間不同，請致電該中心查詢

Operation hours of service depots varies, please call the respective depot prior of your visit.

醫院管理局已啟動「緊急應變級別」，本會設於五間公立醫院之「輔助行動器材租借服務」交收中心，包括：屯門醫院交收中心、瑪嘉烈醫院交收中心、威爾斯親王醫院交收中心、瑪麗醫院交收中心，及東區尤德夫人那打素醫院交收中心，已於2020年1月29日（三）起即時停止服務，直至另行通知為止。

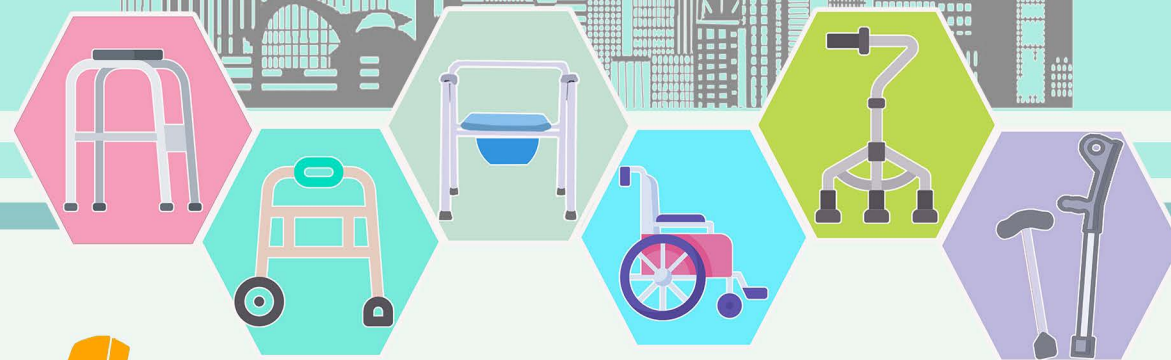
In response to Hospital Authority's activation of "Emergency Response Level" in all public hospitals, our Mobility Equipment Loan (MEL) service depots located in the five public hospitals, including Tuen Mun Hospital, Princess Margaret Hospital, Prince of Wales Hospital, Queen Mary Hospital and Pamela Youde Nethersole Eastern Hospital, have been suspended on 29 January 2020 until further notice.

 香港紅十字會  
HONG KONG RED CROSS

輔助行動器材租借服務  
Mobility Equipment Loan Service

綜合恢復計劃  
Integrated Recovery Plan

器材到戶服務  
Door to Door Delivery Service



 服務查詢 Enquiries  
2610 0515



# 服務目標

## SERVICE OBJECTIVES

香港紅十字會自1975年開設「輔助行動器材租借服務」，多年來有賴慈善基金、器材租金及社區捐款等支持運作經費，為有需要人士提供廉價及優質的輔助行動器材租借服務。

香港紅十字會「綜合恢復計劃」是針對社會事件及2019新型冠狀病毒對香港造成的影響而推行之計劃。「器材到戶服務」為「綜合恢復計劃」項目之一，透過器材免費運送及豁免部份租金(最多三個月)，為有需要而合資格人士提供適時的器材租借服務，以提升他們的活動能力及減輕申請人或其照顧者之經濟負擔。

Hong Kong Red Cross Mobility Equipment Loan Service has been in operation since 1975. This service is made possible through the continuous support from charity foundations, rental fee and public donations. We strive to provide high quality mobility equipment at nominal price for the sick and temporary disabled who require short-term mobility equipment.

Door to Door delivery service is one of the projects under the HKRC Integrated Recovery Plan, which aims to contribute in building a more resilient community of Hong Kong under the impact of social unrest and COVID-19. We target to provide timely mobility equipment service to the targeted vulnerable groups to enhance their mobility and release their financial burdens through 'door-to-door' free delivery and concessionary rate on equipment loan (max. 3 months).

# 服務對象及申請條件

## SERVICE TARGET AND CRITERIA

服務使用者或其家庭需符合以下條件：

對象 (Target)	申請條件* (Eligibility criteria)
<b>長者</b> Elderly persons - 香港居民及 - 60歲或以上之獨居 或 兩老同住者 - 需要短期借用輪椅 / 輔助行動器材	<b>正領取綜合社會保障援助(綜援)或長者生活津貼 (普通/高額)</b> Recipients of Comprehensive Social Security Assistance (CSSA) or Old Age Living Allowance (OALA) (Normal / Higher)
<b>低收入家庭 (行動不便人士或其照顧者)</b> Low-income people with disabilities / low-income caregivers - 香港居民及 - 需要短期借用輪椅 / 輔助行動器材之 人士或其照顧者	<b>正領取綜合社會保障援助(綜援)或每月家庭收入不超過「在職家庭津貼計劃 (全額津貼)」的住戶每月入息上限#</b> Recipients of Comprehensive Social Security Assistance (CSSA) or the individual's monthly household income does not exceed the income & assets limit of "Working Family Allowance Scheme (WFA)" # applicable to his / her household size.

註：\* 申請人需遞交相關入息證明文件 Please submit relevant income proof document along with application form.

# 「在職家庭津貼計劃 (全額津貼)」將依據政府所公佈進行更新 Updates on "Working Family Allowance Scheme" (WFA) will be made according to government policy (if any).

計劃年期：2021年1月至2021年11月

Project Period: January 2021 to November 2021

# 申請方法及流程

## SERVICE APPLICATION

- 由醫務社工或社署/機構註冊社工轉介 或
- 直接聯絡本會總部/交收中心申請

- Referrals can be made by registered social workers of medical social services unit, Social Welfare Department or Non-governmental organizations; or
- Direct application submitted together with the application form and required documents to HKRC Headquarter / service depots.



# 器材租金

## LOAN CHARGES

器材 (Equipment)	每月租金 Charge per month
步行架 (Walking frame)	\$50
四腳叉 (Quadripod)	\$50
拐杖 (Elbow crutches)	\$50
有轆步行架 (Rollator)	\$70
助行車 (Rollator with a basket)	\$120
便椅 (Commode chair)	\$80
沐浴椅 (Bathing chair)	\$50
可傾斜沐浴便椅 (Advanced commode chair)	\$400
輪椅 (Wheelchair)	\$120
高背傾斜及後躺輪椅 (Advanced reclining wheelchair)	\$600
手提斜台板 (Portable ramp)	\$250
輪椅活動枱板 (Wheelchair flip tray)	\$50

所有租借器材必須繳付按金 Deposit for Equipment loan	
器材 Equipment	按金 Deposit
高背傾斜及後躺輪椅 (Advanced reclining wheelchair)	\$1,000
可傾斜沐浴便椅 (Advanced commode chair)	\$500
手提斜台板 (Portable ramp)	\$500
輪椅 (Wheelchair)	\$200
助行車 (Rollator with a basket)	\$200
其他 (Others)	\$100

如所需之器材不在此列可先致電 2610 0515查詢